

EMPOWERING THE MEDICAL EDUCATION ASSESSMENT JOURNEY

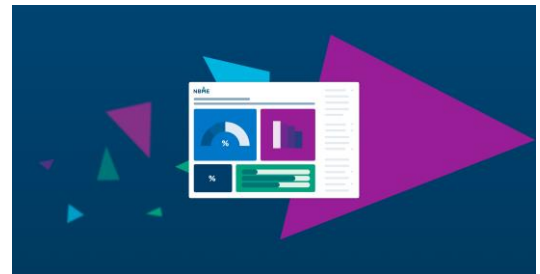
We believe the path to achieving our mission begins with helping to empower the medical education and assessment communities. This edition of *NBME Impact: A Community Report* shines light on:

- [Providing educators and faculty with assessment resources.](#)
- [Supporting learners with programs and resources.](#)
- [Celebrating the impact of people and culture.](#)

PROVIDING EDUCATORS AND FACULTY WITH ASSESSMENT RESOURCES

INSIGHTS® Demo Offers Faculty Insight Into Their Students' Experience

The interactive INSIGHTS dashboard offers robust view, filter and sort features that can transform how learners interact with their assessment results. **These features enable students to better track their performance, identify growth areas and target their studies** across NBME® Self-Assessment, Subject Exam and Customized Assessment Services (CAS) exam results.

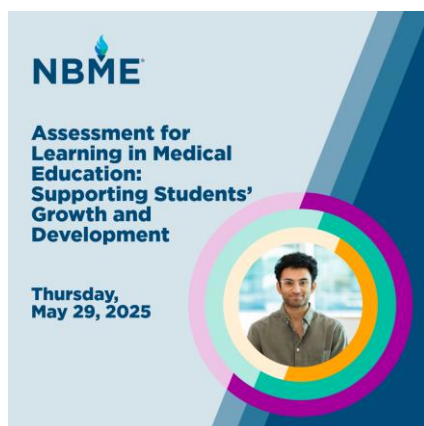


In May, NBME launched a **free interactive demo** where learning specialists and academic advisors can experience INSIGHTS firsthand. This hands-on simulation mimics the actual INSIGHTS interface, allowing faculty to:

- Access complete functionality with sample data, no exam purchase required.
- Explore features that enhance learning.
- Develop training resources.

Learn more and access the INSIGHTS Demo on [NBME's website](#).

Assessment for Learning Webinar Offers Strategies to Support Student Growth



Formative assessment—also known as assessment for learning—helps learners identify knowledge gaps, track their progress and refine their clinical skills throughout the educational journey. NBME hosted a webinar on May 29 with **332 medical educators** that discussed:

- Formative assessment's enhancement of medical education through feedback and tailored teaching.
- Strategies and best practices for the implementation of formative assessment.
- Recent NBME research and development efforts dedicated to this topic.

You can find the webinar recording and a summary of top formative assessment tips on [NBME's website](#).

Speakers Bureau Connects Educators and Schools With Assessment Experts

The NBME Speakers Bureau is a complimentary knowledge network that connects medical educators and schools with our in-house assessment experts for **30- to 45-minute virtual speaking engagements**. Since starting the program in January, **676 educators from 10 medical schools** have connected with NBME assessment experts on a variety of topics, such as:

- Assessment frameworks, innovations and challenges, including the use of artificial intelligence and natural language processing in assessment.
- Assessment development best practices, including addressing fairness and potential bias in test items and using evidence-centered design.
- Measurement/psychometric concepts to understand assessment results.

Learn more about the program and request a speaker on the [NBME Speakers Bureau page](#).

Professional Development Opportunities to Support Early-Career Faculty

Through our [Contributions programs](#), NBME supports medical educators and researchers looking to advance the field of assessment throughout their careers. This starts with professional development opportunities for early-career faculty, including the **NBME Invitational Conference for Educators (NICE)** and the **Strategic Educators Enhancement Fellowship (SEEF)**.

NICE fosters assessment skills and provides a networking venue for those new to medical education assessment. On June 4, NBME hosted a virtual NICE that **449 faculty** attended, representing **150 medical schools in 21 countries**. Expanding the virtual NICE to include international medical schools resulted in nearly a **150% increase in NICE attendance** since our last virtual offering in 2023.

Members of the [second SEEF cohort](#) have been hard at work with their collaborative research projects:

- Delivering five national presentations, two education grand rounds, three individual talks at the fellows' home institutions and one presentation to the Kentucky State Assembly.
- Submitting one paper to *Academic Medicine*.
- Participating in podcasts and receiving recognition in the fellows' local communities.



Early-career faculty interested in developing skills in medical education and assessment research are encouraged to apply for the third SEEF cohort by **Sept. 12**. Learn more on [NBME's SEEF page](#).

SUPPORTING LEARNERS WITH PROGRAMS AND RESOURCES

Scholarships and Awards to Aid Students With Economic Barriers

To help ease the financial challenges of the medical school journey, NBME has funded two programs that support students with demonstrated financial need. In collaboration with National Medical Fellowships (NMF), we contributed \$1.1 million to the:

- **NBME Fee Assistance program for the United States Medical Licensing Examination® (USMLE®):** Launched in 2024, this program provides aid to approximately **1,300 students** per year to offset their fees for the USMLE Step 1 and Step 2 Clinical Knowledge examinations. So far, **41% of recipients are first-generation college graduates.**

This year, NBME is offering three cycles for students to apply, with the current application opportunity open until **Aug. 24**. Learn more about eligibility on [NBME's website](#).

- **NBME/NMF Scholarship:** This program supports the next generation of community-focused medical professionals with **\$10,000-per-year** scholarships. A past recipient [shared the impact](#) of the scholarship on her experience:

“Although I am grateful for my experiences, the journey to medicine has been an expensive one so far. Receiving this scholarship will not only decrease the student loan burden I will face after completing medical school, but it will allow me to have an even more fulfilling and exciting experience as a medical student.”

USMLE Examinee Newsletter Supports Students on the Path to Licensure



To better support medical students and graduates on their path to licensure, the USMLE program launched the **USMLE Examinee Newsletter** in April.

Each edition includes essential information on topics such as the [Bulletin of Information](#), the accommodations request process, free exam practice materials available on [usmle.org](#) and more. So far, more than **1,500 readers** have signed up for the bimonthly newsletter. Medical students and residents interested in receiving key information and resources directly to their inbox can fill out [USMLE's email sign-up form](#).

NBME's YouTube Channel Shares Tips on Unlocking INSIGHTS

NBME's YouTube channel hosts a plethora of content to support medical students' growth and development. Whether it's how to approach NBME test questions designed to measure clinical knowledge or how NBME researchers are advancing the field of assessment, students can find free resources to aid their learning.

Our newest playlist, [Unlocking NBME INSIGHTS](#), features members of the Medical Education Learning Specialists group providing tips for utilizing INSIGHTS to improve student performance, maximize study time and track progress across multiple assessments. Check out these resources and subscribe to our [YouTube channel](#) for strategies and insights to help students with their education journey.



Welcoming the 2025 Assessment Science and Psychometric Interns

NBME's Assessment Science and Psychometric internship program provides students enrolled in doctoral programs in measurement, statistics, cognitive science or medical education the opportunity to pair with seasoned NBME mentors on a research project. Since 2017, **38 students** have participated in the program. In 2025, NBME welcomed these **four interns**:



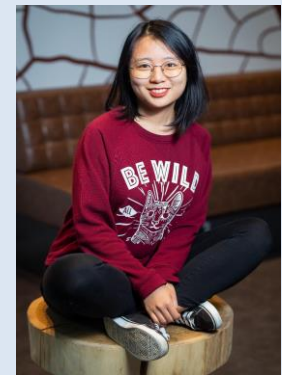
Rupak Kumar Das is pursuing a doctorate in information science and technology at the Pennsylvania State University, University Park.



Ujjayini Das is pursuing a doctorate in survey methodology and data science at the University of Maryland, College Park.



Hannah Lewis is pursuing a doctorate in quantitative psychology at the University of North Carolina, Chapel Hill.



Yunting Liu is pursuing a doctorate in social research methodologies at the University of California, Berkeley.

CELEBRATING THE IMPACT OF PEOPLE AND CULTURE

The Hubbard Award Recognizes Pioneers in Medical Education Assessment

Established in 1983, the Hubbard Award recognizes individuals who pioneered and made broad-based and sustainable contributions to the field of medical education assessment. **Rachel Yudkowsky, MD, MHPE**, was selected as the [2025 recipient](#).

Dr. Yudkowsky is a professor emerita in the department of medical education at the University of Illinois College of Medicine at Chicago. She has dedicated her career to improving assessment methodologies using standardized patients and simulations, exploring assessment of key clinical skills. Her work also addresses setting passing standards for performance tests to help ensure fair, structured and competency-driven assessment decisions.



“It is an incredible honor to receive the Hubbard Award,” Dr. Yudkowsky said. “I have long admired past recipients and the impact they’ve had on medical education. To be recognized among them is deeply meaningful. This award affirms that the work I love—researching and refining assessment practices—has made a real difference.”

Dr. Yudkowsky is a past recipient of [NBME’s Stemmler Grants](#).

If you know a researcher or mentor whom you would like to nominate for the **2026 Hubbard Award**, visit [NBME’s Hubbard Award page](#).

NBME Board of Directors Committed to Advancing Optimal Care for All

NBME has elected **four new at-large members** to its board of directors, each bringing valuable expertise and a commitment to advancing the assessment of health care professionals to achieve optimal care for all. The board of directors is responsible for directing NBME’s policies and strategy,

appointing the president and CEO, as well as reviewing and approving the organization's budget. The new at-large members consist of the following individuals. Learn more about them on [NBME's website](#).



Vicki W. Girard, JD



Karen Hauer, MD, PhD



Sorabh Khandelwal, MD



Wilma Larsen, MD

NBME Continues to Earn Great Place To Work® Certification™

NBME is committed to fostering a strong workplace culture so our employees feel engaged and empowered to impact the medical education and assessment communities. This commitment can be demonstrated through our designation as a **Great Place To Work** for the **third year** in a row, based on responses to an employee engagement survey. Great Place To Work is an independent research and consulting firm, and its certification process considered 60 elements of the overall job experience across NBME's employee population.



Eighty-four percent of NBME employees completed the program's signature Trust Index™ Survey in May, a **10% increase** from last year. A few highlights from the survey results:

- ▶ **86%** say NBME is a great place to work, compared to **57%** of employees at a typical U.S.-based company.
- ▶ **94%** say they were made to feel welcome when joining NBME.
- ▶ **92%** are proud to tell others they work here and feel good about the ways we contribute to the community.
- ▶ **91%** say they are able to take time off from work when they think it's necessary.

Learn more on [NBME's Great Place To Work Certification profile](#).

STAY INFORMED AND CONNECT WITH US

Stay up to date on NBME's latest initiatives and innovative solutions and also connect with us through these channels:

- ▶ **Send us** feedback and story ideas at NBMECommunications@nbme.org.
- ▶ **Follow us** on LinkedIn at [NBME.org](https://www.linkedin.com/company/nbme.org), Facebook [@NBMEConnect](https://www.facebook.com/NBMEConnect) and YouTube [@NBMEnow](https://www.youtube.com/@NBMEnow).
- ▶ **Access** [previous editions](#) of *NBME Impact*.

Copyright © 2025 NBME. All rights reserved.