

EXPANDING CAPABILITIES AND COLLABORATIONS FOR IMPACT

A key focus of NBME's work this year is producing outcomes with impact. In this edition of *NBME Impact: A Community Report*, you can see how we're doing this through expanding our assessment portfolio and its capabilities as well as our collaborations to advance equitable assessment practices. You can also learn more about the organizational talent and culture leading these efforts.

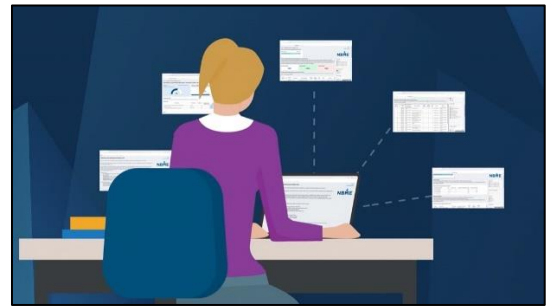
IMPROVING NBME® SELF-ASSESSMENTS TO MEET STUDENTS' NEEDS

Self-assessments are a constructive aid for a student's learning journey. To help develop the next generation of physicians, we've prioritized bolstering NBME Self-Assessments.

NBME Self-Assessments Enhanced Through New Insights Tool

In response to medical students' requests to interact with their NBME Self-Assessments performance data in a more meaningful and customizable way, NBME has created the new NBME Self-Assessment Insights tool.

NBME Self-Assessment Insights is an interactive dashboard that enables users to view, filter and sort results across NBME Self-Assessments, as well as easily obtain their score reports. At least **32,000 students** have accessed this new capability.



NBME Self-Assessment Insights allows for a richer picture of assessment performance by presenting **multiple points of data and outcomes** and showing viewpoints beyond any single result. The tool provides a way for students to:

- Review question details and rationales from each self-assessment using customizable features.
- Dig deeper than their score with improved question details, such as specific content topics and time spent per question.
- See results from multiple forms of the same assessment in one place for tracking progress.

Jennifer Wise, NBME Senior Manager, Product Management, has overseen the development and enhancement of NBME Self-Assessments for several years. She reflected:

“This update allows medical students to see where they are and prepare for where they want to be. I'm excited to see the impact that Self-Assessment Insights will have on students' study efforts as we continue to find ways to better support them.”

Future plans entail expanding Self-Assessment Insights to also include results from NBME Subject Exams, followed by exams administered through Customized Assessment Services. In the interim, NBME will keep self-assessment users informed of timelines and will actively seek feedback to help ensure this experience continues to meet their needs. Learn more about [NBME Self-Assessment Insights on NBME.org](#).

Increasing Availability of Comprehensive Clinical Science Self-Assessments

Medical students and educators rely on NBME Self-Assessments to gauge student readiness for taking both NBME Clinical Science Subject Exams and the United States Medical Licensing Examination® (USMLE®). In recent conversations with students and educators, we heard a clear need for additional [Comprehensive Clinical Science Self-Assessment](#) (CCSSA) forms before students take USMLE Step 2 Clinical Knowledge. To meet this need, we accelerated work to publish **two additional** CCSSA forms this spring. Students now have **six forms** to choose from, which is **double** the number of self-assessments available just two years ago.

COLLABORATING TO ADVANCE EQUITABLE ASSESSMENT PRACTICES

In addition to enhancing our medical school services, recent collaborations have facilitated mutual knowledge sharing and learning of more equitable assessment practices.

Equity in Measurement and Assessment Conference Fosters Dialogue

The [March 2023 Impact Report](#) shared how NBME has been convening with the medical education community to advance approaches that promote equity and alleviate bias in assessment. On April 25-26, 2023, NBME co-sponsored the inaugural [Equity in Measurement and Assessment Conference](#) (EMAC) with the American Board of Medical Specialties, the American Board of Internal Medicine and the Association of American Medical Colleges.

NBME will work with these partners to more broadly share the content that can make the greatest impact for medical education.

Call to Action

In addition to creating a platform for these conversations, we realize we have to keep the dialogue going and engage with educators in the classroom. To start, check out the most impactful EMAC takeaways through the [Top 10 Learnings one-pager](#) and a [brief blog with reflections](#) from **Ye Tong**, NBME Senior Vice President, Assessment Operations.

Share your thoughts on how we can work together to promote equity in assessment on [ReassessTheFuture.org](#).

New In-Training Exam Collaboration Facilitates Mutual Learning

NBME works with multiple organizations to [develop, administer and score in-training examinations](#) (ITE), which help residents assess their learning progress and improve based on their results. Our newest collaboration is with the **American College of Obstetricians and Gynecologists** (ACOG) on their Council on Resident Education in Obstetrics and Gynecology ITE. This past January, **6,060 residents** took this exam, the first administered with NBME.

This collaboration has resulted in mutual learning on equitable and inclusive assessment practices. While NBME brings to the table [rigorous test development and scoring practices](#) that help identify and address potential assessment bias, ACOG has helped increase NBME's understanding of [gender-inclusive language](#) when incorporating patient characteristics in test items.

SPOTLIGHTING THE PEOPLE AND CULTURE WHO MAKE NBME

Organizations are made of people, and at NBME, our people are dedicated to developing their professional expertise and capability to create outcomes with impact for the communities we serve.

New Leaders Focus on Better Engaging Our Communities



Crystal Kwentoh, MPA, joined NBME as Vice President, Marketing and Communications in April 2023. Kwentoh has extensive industry experience in assessment and education. In this role, Kwentoh looks to improve engagement with our audiences and deepen our understanding of medical education assessment needs.



Boris Vilic, MBA, joined NBME as Vice President, Program and Stakeholder Management, in March 2023. Vilic has more than 25 years of experience in education as well as executive level experiences in higher education. In this role, Vilic aims to grow our relationships with customers and collaborators to ensure the relevancy of our programs and services.

Recognition of NBME Talent

NBME leaders and professionals have been recognized for their contributions to medical education, assessment, research and data science.

- ▶ In March 2023, **Joshua Nosanchuk**, MD, joined NBME's Board of Directors, and **Reena Karani**, MD, MHPE, was elevated to NBME Chair. Recently, their accomplishments were highlighted in publications by the [Albert Einstein College of Medicine](#) and [the Icahn School of Medicine at Mount Sinai](#).
- ▶ **Linette Ross**, PhD, Senior Psychometrician, was elected to serve as the Vice President for Division I: Education in the Professions of the American Educational Research Association (AERA). AERA's mission is to advance knowledge about education and to promote the use of research in educational practice. Ross is currently Division I 2024 Program Co-chair. She will assume the VP position at the end of the 2024 annual meeting and serve a three-year term.
- ▶ **Richard Feinberg**, PhD, Principal Psychometrician, and **Daniel Jurich**, PhD, Associate Vice President, USMLE, **won** the Educational Measurement Issues and Practices (EM:IP) cover graphic/data visualization competition for the **sixth time**. EM:IP is one of two prominent journals run by the National Council on Measurement in Education and a leading forum for measurement and psychometric research.



Dr. Karani is the first woman of color to serve as Chair of the Board of Directors in NBME's 108-year history.

NBME Earns Great Place to Work® Certification™

Based on responses in a recent employee engagement survey, NBME has been designated as a **2023-2024 Great Place to Work**. Great Place to Work is an independent research and consulting firm, and its certification process considered 60 elements of overall job experience across NBME's employee population.

More than **65%** of NBME employees completed the program's signature Trust Index™ Survey in May 2023. A few highlights from the survey results include:

- ▶ **78%** say NBME is a great place to work, compared to **57%** of employees at a typical U.S based company.
- ▶ **89%** are proud to tell others they work here.
- ▶ **90%** say they are made to feel welcome when joining NBME.
- ▶ **91%** say they are able to take time off from work when they think it's necessary.

Learn more about NBME's [Great Place to Work Certification on NBME.org](https://www.nbme.org/great-place-to-work).



STAY INFORMED AND CONNECT WITH US

At any time, you can stay up to date on NBME's latest initiatives and innovative solutions as well as connect with us through these channels:

- ▶ **Send us** feedback about the content in this edition by emailing NBMECommunications@nbme.org.
- ▶ **Share your thoughts** on [Reassess the Future](#) to meet this moment in medicine together.
- ▶ **Find us** on LinkedIn at [NBME.org](https://www.linkedin.com/company/nbme.org), follow us on Twitter [@NBMEnow](https://twitter.com/NBMEnow) and like us on Facebook [@NBME.org](https://www.facebook.com/NBME.org).
- ▶ **Access [previous editions](#)** of this report to learn about NBME's efforts in other areas.

Copyright © 2023 NBME. All rights reserved.